



Hebei Qijie Wire Mesh MFG Co.,Ltd.

河北启捷丝网制造有限公司

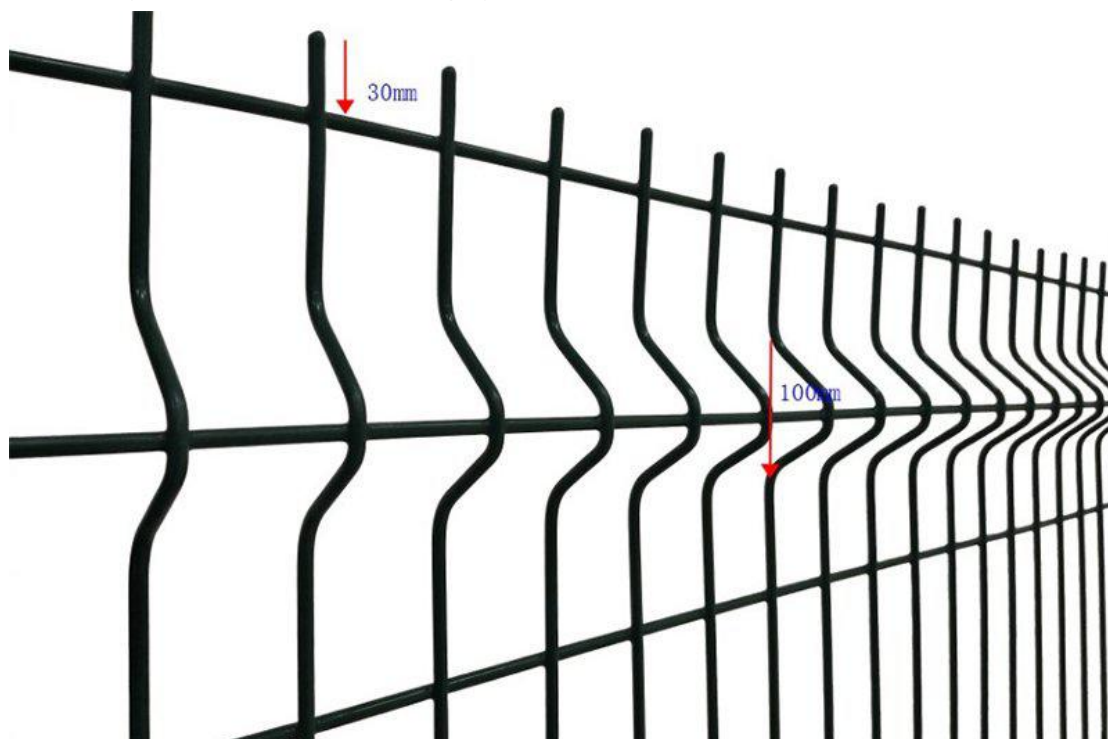
www.industrialmetalmesh.com www.3dmeshfence.com

3D Curved Wire Mesh Fence is one of the easiest ways to ensure that your property is kept secure. Due to its versatile appearance it can be used for a number of different premises, surrounding large areas without restricting the view.

This systems is ideal for basic demarcation. Mainly applied to public areas such as schools, parks, sports arenas and many other residential areas due to its rigidity and aesthetic appeal. It is the perfect deterrent for any commercial business wanting the extra security edge.



Alternatively, our fence can also be purchased loose per individual item. Combining a rigid **3D Curved Wire Mesh Fence** with a box section post with integrated fixings creates a simple, yet effective, mesh fencing system.



Add:Wanggezhuang industry,Anping City, hebei province,China.053600
Tel:+86-0318-8099652 Fax:+86-0318-8559002 Phone:+86-15369013183



Hebei Qijie Wire Mesh MFG Co.,Ltd.

河北启捷丝网制造有限公司

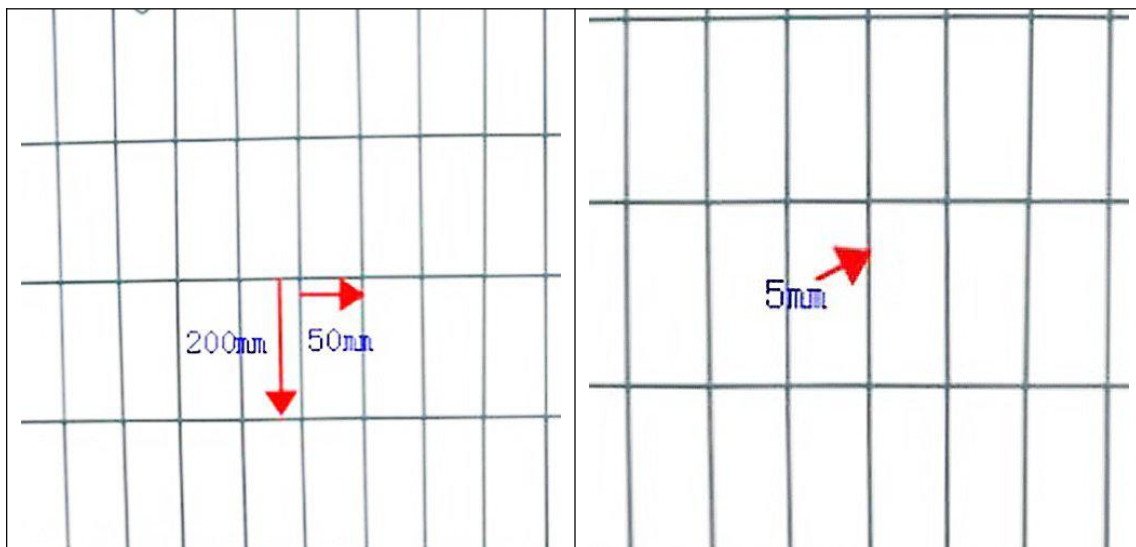
www.industrialmetalmesh.com www.3dmeshfence.com

SHS tube is popular to use as the post of fencing, galvanized tube with powder coated to suit the color of panels. Which can be fixed to the ground by steel base and anchors, also has another way of dip it under the ground.

There are several kinds of clamps available for connection posts and panels. M clamp and Metal clamp would to drilling holes on the post then using screws to set the panels. A kind plastic clamp can help to fix the panels without drilling, and you can adjust it's place up and down as you want.

Specification

Wire Diameter	Mesh Size	Length	Height	Fold No.
3.0mm	50x200mm	2000mm	1030mm	2
4.0mm	55x200mm	2200mm	1230mm	2
4.5mm	50x100mm	2500mm	1530mm	3
4.5mm	75x150mm	3000mm	1830mm	3
5.0mm			2030mm	4
5.5mm			2230mm	4
6.0mm			2430mm	4



The finish of this fencing includes a galvanized substrate and polyester powder coating in a range of standard colors.

Detail

The fence panels are manufactured using 5mm diameter which is welded at each intersection. Horizontal profiled beams are added to the panel to give additional strength and to remove flexing in the panel. The mesh aperture consists of 200 x 50mm mesh spacing which provides excellent see-through visibility and protection. And different sizes are available for you to choose.

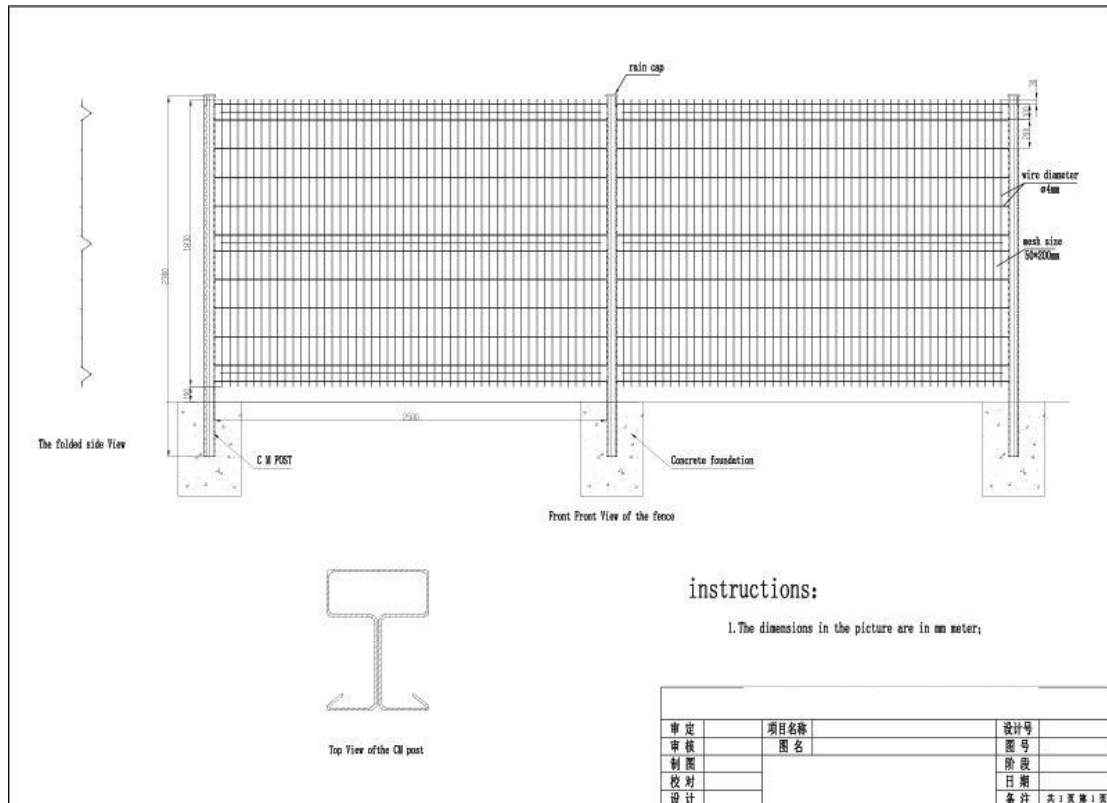
Add:Wanggezhuang industry,Anping City, hebei province,China.053600
Tel:+86-0318-8099652 Fax:+86-0318-8559002 Phone:+86-15369013183



Hebei Qijie Wire Mesh MFG Co.,Ltd.

河北启捷丝网制造有限公司

www.industrialmetalmesh.com www.3dmeshfence.com



Packing

Packing is import for the products as the ship would be rough shaking during the sailing, which would make serious damage to the goods. Our panels are usually packing in wooden pallet with carbon board circle around it. Posts are packing in bubble film with tape to fix it. All the clamps are packed into carbon boxes.

Add:Wanggezhuang industry,Anping City, hebei province,China.053600
Tel:+86-0318-8099652 Fax:+86-0318-8559002 Phone:+86-15369013183



Hebei Qijie Wire Mesh MFG Co.,Ltd.

河北启捷丝网制造有限公司

www.industrialmetalmesh.com www.3dmeshfence.com



Add:Wanggezhuang industry,Anping City, hebei province,China.053600
Tel:+86-0318-8099652 Fax:+86-0318-8559002 Phone:+86-15369013183